

Alderlea T5



AirWash

Soot-covered fireplace glass? Not likely with a Pacific Energy stove or insert. Over 30 years ago, we pioneered the use of glass doors on free standing woodstoves. We followed that with the first effective airwash manifold system, a design that flows pre-heated air to the glass surface to keep it clean.

Over the years we have continued to refine our airwash design: it now creates a high-pressure zone in the center and forces air to flow from above and across the glass. Even at low air settings, we are confident that our airwash system is the most effective available. And that our glass doors are among the cleanest in the industry.

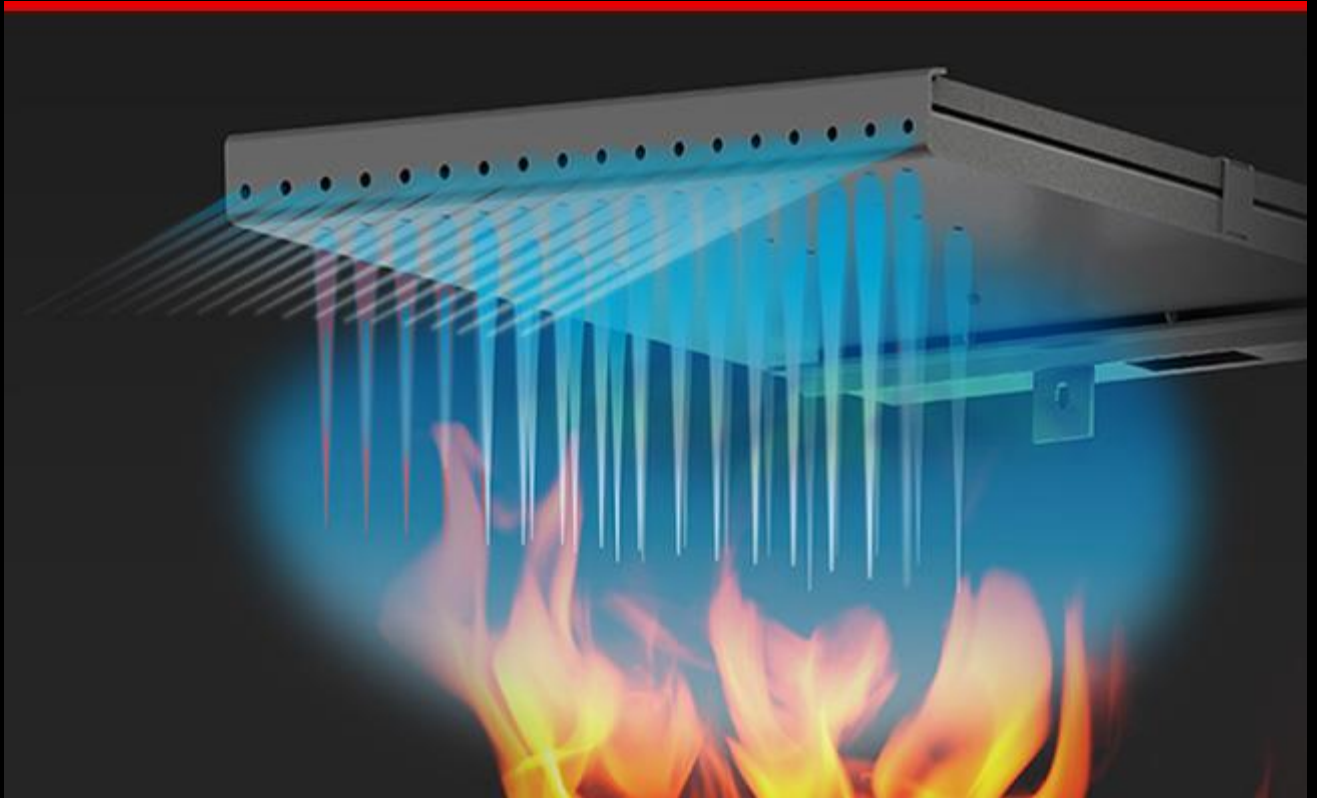


Self-Sealing Ash Dump (select models only)

Our self-sealing ash dump, with its spring-loaded trap door, provides a time saving, hassle-free ash removal solution that, has yet to be equaled.

Serious wood burners utilize ash removal systems. Many stoves simply have a removable cover over their ash removal opening inside the firebox.

Pacific Energy's machined steel, spring loaded ash removal system is opened from outside the stove and closes automatically for safety and convenience when you're done.



Baffle System

Pacific Energy is a recognized industry leader in “clean burn” technology, as exemplified in our unique high capacity baffle system for preheating secondary combustion air for re-burning. By burning the combustible elements in the air, we improve our stoves’ environmental performance while significantly reducing the amount of wood that is consumed.

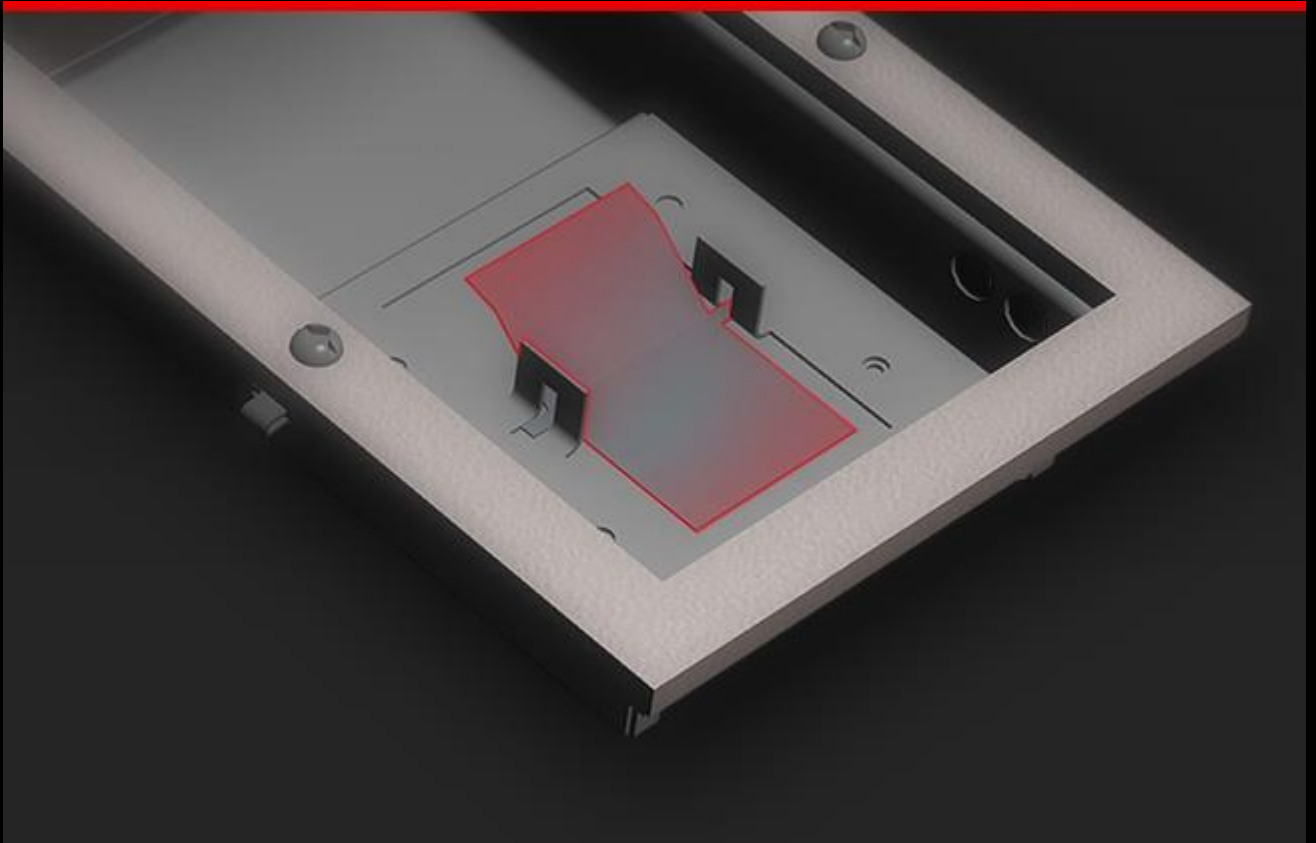
The design and construction of our baffles is second to none: these removable hollow chambers are precisely formed and perforated to allow a continuous, controlled flow of secondary air—with no moving parts. Constructed from fully seam-welded 304 grade, non-ferrous stainless steel* they ensure efficient combustion of secondary air throughout the entire burn cycle. Like every component in a Pacific Energy stove or insert, they are guaranteed to perform for a lifetime.



Cast Iron Over Steel

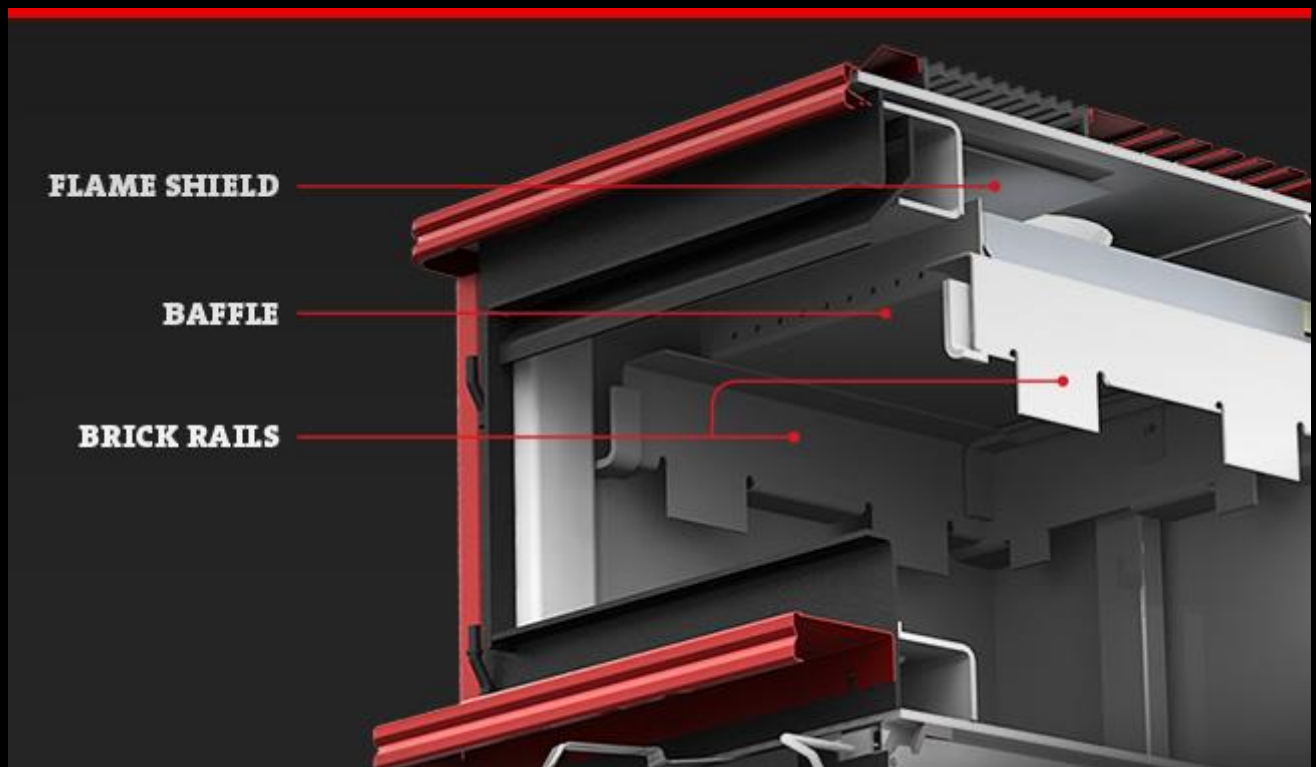
Until we pioneered the Alderlea line, and its revolutionary iron-wrapped steel firebox, a cast-iron stove was just that: cast iron. The Alderlea design makes the most of each metal: the steel stove and floating firebox is free to expand and contract, and its design maximizes convective heat efficiency, while the cast iron wrapping provides radiant heat. This superior system greatly extends longevity over an all cast stove. Metal fatigue is no longer a factor, allowing us to offer the industry's first lifetime warranty on a cast stove.

This technical innovation lives “under the skin” of the Alderlea line, which maintains the beloved traditional woodstove appearance. We say it’s “powered by design, and crafted by tradition”.



EBT2

Our second-generation Extended Burn Technology, or EBT2, precisely regulates secondary airflow based on vacuum created by the chimney for a longer, cleaner, more economical burn. This automatically adjusts the secondary combustion system, for a cleaner, more efficient burn and extended burn time.



Floating Firebox

It may be obvious that a firebox is subjected to wild extremes of temperature. In some stoves, those extremes, and the related expansion and contraction, can lead to premature fatigue, and even failure, of metal components. But not in a Pacific Energy, our floating firebox system is legendary in the industry. Solidly designed with 304 grade stainless steel brick-support rails, it allows key parts to freely expand and contract, which reduces metal fatigue and adds years of life to the entire stove. The stainless steel baffle (part of the clean-burning secondary combustion system) the flame shield (which protects the stove top from intense heat) are all part of the floating firebox system.

It costs more to build a stove this way, but we feel it's well worth it. It's one of the reasons we're confident in offering a lifetime warranty on every one of our stoves and inserts. And why our products don't click, tick and ping when they heat and cool.

FLAME SHIELD

Made from 304 grade stainless steel to protect the stove top from intense heat.

BAFFLE

High volume secondary air combustion system for maximum efficiency.

BRICK RAILS

Allow key parts to freely expand and contract, reducing metal fatigue and adding years of life to the stove.



Knife Edge Door

A formed and welded knife edge opening creates a superior air tight seal to the door gasket while strengthening the stove face. This is a more labor intensive design but our experience has proven this is the best way to manufacture a fireplace.